

Draft State Heritage Inventory Form

ITEM DETAILS						
Name of Item	ANZAC Memorial Avenue, O'Connell					
Other Name/s Former Name/s	O'Connell ANZAC Memorial Avenue, Avenue of Trees at O'Connell, O'Connell First World War Memorial Avenue					
Item type (if known)	Landscape (Cultural)					
Item group (if known)	Monuments and Memorials					
Item category (if known)	World War I Memorial					
Area, Group, or Collection Name	Memorial Avenue, O'Connell					
Street number	Transport Corridor					
Street name	Bathurst-Oberon Road MR253					
Suburb/town	O'Connell				Postcode	2795
Local Government Area/s	Oberon Council					
Property description	Bathurst-Oberon Road MR253 Road Reserve between Beaconsfield Road and Box Flat Road. Refer to attached mapping and curtilage.					
Location - Lat/long	Latitude				Longitude	
Location - AMG (if no street address)	Zone		Easting		Northing	
Owner	Transport for NSW					
Current use	Bathurst-Oberon Road and War Memorial					
Former Use	As noted above					
Statement of significance	<p>The ANZAC Memorial Avenue in O'Connell was originally conceived in 1925 to extend from the heart of the O'Connell Village to the Fish River; a considerable distance of approximately 2 miles. The establishment of the memorial was not fully realised at the time but the completed section today still represents a highly significant Avenue of Honour in New South Wales. The Memorial has State and Local level cultural significance demonstrated in its historical, associational, aesthetic, social, research and representative values. Aspects of its form, material and character, such as the largely intact double row of Desert Ash plantings spanning over a kilometre of a major road are rare in NSW, if not Australia. Many avenues elsewhere in Australia from the period have suffered from the challenges of climate, weather, pests, road works and other environmental damage.</p> <p>The erection of War Memorials and the planting of memorial Avenues was part of a national phenomenon which took place in Australia from the end of WWI, through the 1920s, and was repeated to a lesser extent after WWII. The O'Connell avenue commemorates local people who served in WW1 and was initiated and implemented by the local community through the O'Connell Progress Association. The O'Connell avenue has significant associational values with the opening of the completed section in January 1926 by General Sir Edmund Allenby who led the Egyptian Expeditionary Force to victory in Palestine and Syria in 1917 and 1918.</p> <p>Edgar Allan Gornall (Eddie) appears to have been the driving force of the local Progress Association at the time. Edgar was from an early Bathurst family and enlisted in WW1 receiving the <i>1914/1915 Star</i>, the <i>British War Medal</i> and the</p>					

Draft State Heritage Inventory Form

	<p><i>Victory Medal</i> for his active service. Eddie also received a medal from <i>His Majesty, King Peter of Serbia, the Serbian Silver Medal</i> for his bravery in holding a telephone in the trenches on Gallipoli. It appears that he may have been one of the last service men to leave the Australian trenches during the evacuation of the ANZAC positions. Edgar married into an established O'Connell family in 1924 and the route of the avenue of trees bordered his and his wife's large rural property 'Belvoir'. After moving to Sydney in 1928, Edgar appears to have continued working with community groups and is commemorated in the naming of a public reserve in Sydney's Northern Beaches area.</p> <p>The ANZAC Memorial Avenue is an integral element of the O'Connell Heritage Conservation Area. The rural setting of the township within the O'Connell valley and its lush agricultural and pastoral land, surrounded by gently rising fields with the backdrop of Oberon's rugged forested hills is of high scenic significance. The listing of the HCA particularly notes that the approach to the village from the north is of particular significance with the picturesque rural vista from Cox's Hill, the crossing of the Fish River and the passage through the Memorial Avenue of trees. The avenue is a visual landmark located close to the centre of the village. It is also the main unifying element in the village of O'Connell, the avenue links the various historic buildings along the Bathurst - Oberon Road and identifies the location of the village to motorists travelling along the road.</p> <p>O'Connell has a rich history and was located close to the main road west for many years. It is a relatively small tightly knit rural community. The avenue has strong social significance to the O'Connell community which is clearly illustrated by the community commitment and passion at the heart of the memorial project in 1925. The establishment of the avenue in 1925 required considerable effort, funding and resources, all of which were only made possible by local community action. The same commitment is evident today in the response and sensitive management and care of the avenue by the community. The O'Connell community also have a strong attachment to the wider cultural landscape of the O'Connell valley which has been evident over many years from their positive efforts to appropriately manage its landscape and environment to ensure that its qualities are not eroded.</p> <p>The avenue provides a distinct identity to the settlement which is valued highly by many in the contemporary community. Evidence of this may be seen in the decoration of the trees with red poppies made by the Village Preservation Group for Armistice Day since 1996. One of the members of the community from the establishment of the Memorial Avenue and original planting of trees still lives in O'Connell which adds to the overall immediacy of local experience which is rare in Australia today. ANZAC Day services are held annually at the Avenue and the commemorations are well attended by the community.</p> <p>A measure of social significance is the esteem in which an item is held by the contemporary community or recognisable groups within that community. The avenue is recognised by authoritative conservation organisations as an important component of the settlement of O'Connell. The involvement of Regional and State Government in the selection and propagation of the Desert Ash is an important aspect of their research potential. The trees were recommended by the Department of Agriculture as being 'a most beautiful tree' and at this time, the Bathurst Experimental Farm were growing the trees for the Sydney Botanical Gardens, therefore, they were able to supply the trees to the O'Connell Progress Association. The wider State and Regional involvement continues today through the assistance of Faculty of Agriculture, Food and Natural Resources at University of Sydney.</p> <p>The O'Connell HCA has identified State rarity values as detailed in the 2013 listing; the combination of early history, early settlement patterns, high degree of intactness of the worked rural landscape, high degree of intactness of the traditional buildings and high aesthetic values of the overall river valley setting are rare in NSW. Many of the characteristics of a small 19th C rural English hamlet, transferred to Australia</p>
--	---

Draft State Heritage Inventory Form

	<p>through the early European settlers, are still evident in the character, scale and setting of the village of O'Connell and its buildings. The ANZAC Memorial Avenue is located in the heart of the HCA.</p> <p>The avenue is a highly intact representative example of an early 20th Century living memorial. It incorporates the key aspects of these commemorative memorial avenues, including use of a specific tree species that have strong associations with WW1 and the wider symbolism of lives lost. The Avenue is listed on the respective databases of monuments and memorials and in Australia.</p>	
Level of Significance	State <input checked="" type="checkbox"/>	Local <input type="checkbox"/>

DESCRIPTION	
Designer	The O'Connell Progress Association; initiated by the then President of the Progress Association, Edgar Allan Gornall, a local resident and property owner.
Builder/ maker	The O'Connell Progress Association, O'Connell community and local volunteers – raising funds and implementation. Oberon Shire Council assisted with engineering works on site. Subsequent restoration work on the trees implemented between 2010 and 2020 by the Guardians of the ANZAC Memorial Avenue.
Physical Description	<p>O'Connell is located in the Central Tableland region of New South Wales. The Central Tablelands were centred on Bathurst and included Orange, Wellington, Mudgee, Lithgow, Oberon and among other localities in the Central West.</p> <p>The village of O'Connell is located 23 kilometres west of Oberon almost midway between Bathurst and Oberon on the Bathurst to Oberon road, known as the O'Connell Road. The historic settlement once spread over three kilometres along the rich alluvial river flats of the Fish River, from the foot of Cox's Hill on the northern side of the Fish River to the O'Connell Hotel and adjacent bakery in the south. The valley presents as lush agricultural and pastoral land surrounded by gently rising fields with the rugged forested hills of the Oberon district behind. The river and the O'Connell Road wind their way across the centre of this landscape setting with their margin of mature trees marking their routes when viewed from the top of Cox's Hill. Isolated homesteads, farms and other rural outbuildings are dotted through the valley with the patchwork of fields and fences defining the largely rural character of the valley. The settlement of O'Connell is not immediately visible in the approach to the village and is only gradually perceived as isolated historic buildings linked by the ANZAC Memorial Avenue of trees on the northern approach to the village.</p> <p>Since settlement in the early 1830s, the land around O'Connell has been largely cleared for grazing. The steeper hills are still clothed with eucalypt woodland and the gentler slopes and alluvial flats of the Fish River support pastures with scattered eucalypts and exotic trees such as <i>Pinus radiata</i> (Monterey Pine) and <i>Populus nigra</i> 'Italica' (Lombardy Poplar). Along the river are <i>Salix babylonica</i> (Weeping Willow) and <i>Casuarina cunninghamiana</i> (River Oak).</p> <p>The land to the south of the Fish River was part of the Hassall family estates. The ANZAC Memorial Avenue of trees is one of the landmarks that define the point of arrival in the village today. The other landmarks are noted in the SHI inventory sheet for the O'Connell Heritage Conservation Area. The avenue was established in 1925-26 and originally planned to extend from the township to the Fish River. Today the avenue starts to the south of the Wiseman's Creek road junction (now</p>

Draft State Heritage Inventory Form

	<p>known as Beaconsfield Road) and leads into the centre of the village at the O'Connell Hotel. The avenue extends a distance of just over a kilometre (3/4 mile) almost half way to the Fish River.</p> <p>The avenue is a double row of Desert Ash planted either side of the single carriageway rural road with soft natural verges between the edges of the road pavement and the fence lines of the open paddocks beyond on either side. The 1998 CMP noted that canopies create an arched space evocative of the interior of a Gothic cathedral and the avenue is an integral part of the broader cultural landscape which is based on exotic deciduous trees and conifers planted in a pastoral setting the seasonal effects, such as flowers (in the road verges) and autumn foliage contributes to the significance of the avenue. The sealed road width within the avenue averages approximately 8 metres. Unsealed shoulders extend a further 1 to 2 metres either side of the road. The trees are located just off the road shoulders, with an average distance between the trunks measured across the road of 15 metres. The road slopes down towards the north and trees in this area are generally larger and more vigorous than those upslope, probably due to water availability and difference in soil type and depth. Trees in the north west section of the avenue are generally better specimens, possibly as a result of runoff and nutrients from adjoining farmland, although this area was excavated for drainage purposes during 1993.</p> <p>The trees on the eastern side of the road have been pruned in the past for line clearance. The overhead powerlines have been removed except for a section of bundled cabling extending from tree 1 to tree 8 (closest to the hotel). The western trees are generally single- or codominant-leadered, with main scaffold branches arching over the roadway in larger specimens with the archway effect more prominent at the northern end of the avenue. The 1998 CMP assessment of significance regarded the aesthetic significance.</p> <p>The maintenance, re-planting and ongoing monitoring of condition, subsequent to the University of Sydney recommendations, have mitigated the earlier effects of neglect, drought, health and pollarding which has recovered much of the aesthetic and physical character.</p>					
Physical condition and Archaeological potential	<p>A number of condition reports have been carried out since the CMP in 1998 and the most recent being that completed by the University of Sydney in 2010. The detailed report by the Faculty of Agriculture, inspected and identified evidence of 128 plantings of which 109 plantings were living. The balance of 19 were either dead or removed. An urgent need for a systematic re-planting programme was recommended and has subsequently been implemented.</p> <p>The curtilage has been used as a road since early establishment of O'Connell and the Fish River crossing, so It is unlikely that there is high archaeological potential in the curtilage other than for potential early road and associated drainage formations.</p>					
Construction years	Start year	1925	Finish year	1926 (stage 1 to Beaconsfield Road)	Circa	<input type="checkbox"/>
Modifications and dates	<p>There appear to be few formal records of the care and maintenance to the trees after planting in 1925 until the preparation of the CMP in 1998. The informal interview with local resident Allan Todd (Wiseman Creek)(Date?) suggests that there were (i) initial issues with protection from stock which was resolved with the timber and netting at the time of planting and then (ii) later issues of blackberries and subsequent spraying which damaged a number of trees. Date unknown at this stage.</p>					

Draft State Heritage Inventory Form

	<p>In more recent years the following reports were prepared which resulted in a range of conservation works between 2000-2013 :</p> <ul style="list-style-type: none"> ▪ MUSCape report 1999 ▪ Ozark report February 2007 ▪ Martin & McKechnie report August 2010 ▪ Agile Arbor site works, Gregor Van Emmerik, June 2013 ▪ Community liaison with Oberon Council and RTA re tree-planting and maintenance in 2012/2013 ▪ Community concern re poor health of trees - liaison with RTA - report by Agile Arbor in 2013 ▪ Community negotiation with Oberon Council re stonework/signage during 2014 and 2015 ▪ On 6 December 2017 the Community Guardians, Oberon Council and RTA agreed on a process for ongoing care of the trees following the end of the RTA five year good will period of involvement. ▪ On 5 November 2019, in an email stated: "The O'Connell Valley Community Group is sponsoring a grant application to the NSW government The Community War Memorials Fund. Max usually \$10k. RMS happy having handed responsibility to Council. Council happy to support application. Application due in by Monday 11th November, appropriately." ▪ Liaison with Council re ongoing maintenance / mowing for Anzac Day and Remembrance Day services. Ongoing ANZAC Day and Remembrance Day services adjacent to the Avenue. ▪ In March 2021 arborist engaged to check health of O'Connell ANZAC Memorial.
Further comments	<ul style="list-style-type: none"> ▪ Recommend drawing together a consolidated, centralised and complete repository of information and records on the Avenue to assist in ongoing management. The recent heritage assessment found that while there was considerable useful material it was sometimes fragmented and held by different groups. This would assist in ensuring an efficient response to circumstances relating to the avenue. Perhaps Oberon Council could assist in considering an approach and centralised location.

HISTORY	
Historical notes	<p>In 1813 George Evans crossed the Blue Mountains, looked upon the Central Tableland and found it good: <i>'I am more pleased with the Country every day. It is a great extent of Grazing land without being divided by barren spaces as on the East side of the Mountains, and well watered by running streams in almost every Valley'</i>. Though timbered, the rolling plains around the Macquarie River were open, with long visibility and an encouraging quality of grass. The new colony's need for new expansive grazing land was the prime mover in the early colonisation of the tableland and the establishment of the early towns. European settlement in these southeastern parts of the region was tentative because of apprehensions about resistance from the Aboriginal people. Members of the Wiradjuri linguistic group had occupied on a seasonal basis most of the Macquarie River area.</p> <p>At O'Connell the first grants were given in 1823 to the Reverend William Walker, and to the Reverend Thomas Hassall and his brothers James and Samuel Hassall. The township and surrounding landholdings have significant historical associations</p>

Draft State Heritage Inventory Form

	<p>with prominent figures in the Colony of New South Wales. Gold was discovered in February 1823 at Kinghorn Falls on the Fish River. There were also goldfields at Wisemans Creek and O'Connell Plains was becoming an important staging post on the main western road to Bathurst, which led to the building of some of O'Connell's earliest buildings.</p> <p>The prime agricultural land in O'Connell was an important aspect in the history and development of the valley and this remains much the same today. Today, the valley presents as lush agricultural and pastoral land surrounded by gently rising fields with the rugged forested hills of the Oberon district behind. The river and the O'Connell Road wind their way across the centre of this landscape setting with their margin of mature trees marking their routes when viewed from the top of Cox's Hill. The 20th C period in O'Connell has seen little change because of its isolated location off the Great Western Highway which carried the bulk of east-west traffic, low population and relative scarcity of work. Since Council amalgamations and LGA boundaries that occurred in 2004 the northern section lies in Bathurst Regional Council area and the southern section in Oberon Council area.</p> <p>The Armistice of 11th November 1918 ended the First World War. Australia, with a 1914 population of just 3 million, had 415 citizens mobilised in military service over World War 1's duration. 60,000 servicemen and women did not return. This left lasting scars. Avenues of Honour were a living way of remembering and honouring those lives and sacrifices</p> <p>Thirty six men and women of O'Connell enlisted and served in the First World War. There were 34 men and two women. Of the 36 who served, 10 died on active service. In O'Connell, the first public mention of a memorial avenue appears to have been in the Bathurst Times of 17 April 1925:</p> <p><i>"The movement to have a Memory Avenue planted at O'Connell is receiving enthusiastic support. A working bee has been arranged for Saturday to cut poles for tree guards, while a meeting of ladies has been called to arrange for social functions, and provide meals for the workers. The first social in aid of the Avenue movement is listed for April 29, when Hurrell's orchestra will furnish the music. The secretary of the Avenue Committee has been advised by the curator of the botanical gardens that desert ash trees are the most suitable for the avenue.</i></p> <p>As supporting material for the 2008 National Trust listing of the ANZAC Memorial the Bathurst Branch compiled a collection of local newspaper articles held on microfilm in Bathurst Public Library. The articles provide an evocative outline to the local community's efforts, enthusiasm and progress during the work. The costs were considerable for a small rural community. In view of their importance the articles are attached to this assessment report for reference.</p> <p>In early 1925 the O'Connell Progress Association appears to have been formed by Edgar Gornall who then initiated the ANZAC Avenue through the Association. Edgar Gornall (President) and W.T. Pickup (Secretary) were recognised at the time as the 'hardworking promoters' but also had the 'unfailing support of a small committee who threw their energies wholeheartedly into the project' The original concept for the memorial was an avenue of Desert Ash trees from the O'Connell Hotel to the Fish River crossing, a distance of almost 2 miles. The avenue would comprise approximately 500 trees and would be carried out in two stages. The first stage from the O'Connell Hotel to the O'Connell Post Office close to the corner of Beaconsfield Road, a distance of ¾ mile (1.1km). The second stage from the Post Office to the Fish River bridge, a similar distance of ¾ mile (1.1km).</p>
--	--

Draft State Heritage Inventory Form

	<p>On 24 June 1925 a deputation from O'Connell Progress Association interviewed the Council and explained their proposals regarding the Memorial Avenue at O'Connell. <i>"On the motion of Crs Wilcox and Hughes, it was decided to grant permission to the association to plant trees on the roadway, with the exception of the narrow part of the road, and that it be left to the engineer or overseer to arrange where".</i> The location and extent of the 'narrow part' of the road is unclear at this stage and whether it may have played a part in the 'staging' of the overall project to the river.</p> <p>By September 1925 an article in the National Advocate advertised a "Radio Ball", one of the first to be held outside the Metropolis is to be held at O'Connell and noted that <i>"the live wires of the community have for some time past been getting together under the guiding hand of Edgar Gornall, and already the first half of the ANZAC Avenue has been completed and runs from the store to the Hotel. So far 225 Desert Ash trees have been planted. It is hoped that by means of the projected ball sufficient money will be raised to enable an early start to be made on the planting of the second section, from the store to the bridge, which will require about three hundred more trees. The completed avenue will be one of the longest in Australia, and great credit is reflected on those progressive people concerned".</i></p> <p>The first stage of the ANZAC Memorial Avenue was completed by January 1926 and was opened by Field Marshall Edmund Allenby, a famous WWI British Commander fortuitously visiting Australia. It was appropriate that Lord Allenby opened the ANZAC Memorial; during WW1, then General Sir Edmund Allenby, was commander of the allied forces in the Middle East, including the ANZAC Light Horsemen, involved in the famous charge at Beersheba.</p> <p><i>There are a number of newspaper articles providing details of the brief ceremony and importantly the ongoing work on the avenue. The articles illustrate the intent to complete the avenue to the Fish River with further public fund raising events in hand the "The chief force was the O'Connell Progress Association. At the ceremony, Mr E. Gornall, President, introduced Lord Allenby noting that the work of building the other half (of the ANZAC Memorial Avenue) would start immediately. Lord Allenby said he was very pleased to open this avenue in memory of those gallant soldiers who died in the Great War. It was very fitting that this avenue had been made in the memory of those great Australian soldiers, who gave their lives for the great cause and as these trees grew they must think of the men who gave their lives for their country. He then declared the avenue open, and Lady Allenby cut the ribbon.</i></p> <p>A front page article in the Western Times on Saturday 30 January 1926 covering O'Connell's 'fine effort', the completed section from Hotel to Post Office, the official opening, the determination to complete the avenue at an early date and that <i>"O'Connell folk don't believe in half measures....they intend to achieve their aim, despite the expense and work involved".</i></p> <p>The locality of O'Connell has a long history of community pride and spirit, which is evidenced by the number of social interest action groups that have, and continue to, exist. These groups all share an interest, attachment and passion for the O'Connell locality and have made considerable contributions to the locality, its care and management. The establishment of the ANZAC Memorial Avenue in the early 20th century is a good example of that local energy but there are other more recent examples. The O'Connell community have contributed widely to the care and management of the character of the O'Connell valley and its broader cultural landscape values. Aspects of their contributions are further detailed in the heritage assessment accompanying this SHI inventory sheet.</p>
--	---

Draft State Heritage Inventory Form

THEMES	
National historical theme	4. Settlement 7. Governing 9. Phases of Life
State historical theme	Towns, Suburbs and Villages Defence Birth and Death Events
Local historical theme	Beautifying town and villages Memorialising the defenders Remembering the deceased Developing local landmarks

APPLICATION OF CRITERIA	
Historical significance SHR criteria (a)	<ul style="list-style-type: none"> The erection of War Memorials and the planting of memorial Avenues was part of a national phenomenon which took place in Australia from the end of WWI, through the 1920s, and was repeated to a lesser extent after WWII. (State) The avenue is associated with the commemoration of local people who served in WW1 and is a good example of a memorial avenue in NSW. The bold intent of the original memorial was for the avenue to extend from the heart of the village to the Fish River crossing a considerable distance of almost 2 miles. (State) The avenue was intended to comprise over 500 trees and at least 225 desert ash trees were planted to complete the first stage. The trees have been located along O'Connell Road for 99 years with the 100 year commemorative anniversary in 2026. (State)
Historical association significance SHR criteria (b)	<ul style="list-style-type: none"> The avenue was formally opened by Field Marshall Viscount Allenby in early 1926. General Sir Edmund Allenby led the Egyptian Expeditionary Force to victory in Palestine and Syria in 1917 and 1918. He successfully pioneered the combined use of infantry, cavalry, tanks, artillery and aeroplanes at the Battle of Megiddo. Allenby's British Yeomanry, Australian and Indian cavalry units were particularly successful against the Turks at Gaza and Bersheeba (State) The initiative to establish an Avenue of Honour in O'Connell was driven during Edgar Allan Gornall's term as President of the O'Connell Progress Association with the first stage completed in January 1926. Gornall was from an early Bathurst family and enlisted in WW1 receiving the 1914/1915 Star, the British War Medal and the Victory Medal for his active service. Gornall was also received a medal from His Majesty, King Peter of Serbia, the Serbian Silver Medal for his bravery in holding a telephone in the trenches on Gallipoli. It appears that he may have been one of the last service men to leave the Australian trenches during the evacuation of the ANZAC positions (State) Edgar Gornall later worked with the Condoblin community and served as an alderman and Mayor in the early 1920s before settling at O'Connell. In his later years he moved to the Sydney and continued to work with local communities, as illustrated by the 'Edgar Gornall Wildflower Reserve' on the Collaroy escarpment named in his memory. (Local)
Aesthetic significance SHR criteria (c)	<ul style="list-style-type: none"> The avenue is an integral element of the O'Connell Heritage Conservation Area. The rural setting of the township within the O'Connell valley and its lush agricultural and pastoral land, surrounded by gently rising fields with the backdrop of Oberon's rugged forested hills is of high scenic significance. The listing of the HCA particularly notes that the approach to the village from the

Draft State Heritage Inventory Form

	<p>north is of particular significance with the picturesque rural vista from Cox's Hill, the crossing of the Fish River and the passage through the Memorial Avenue of trees. (Local)</p> <ul style="list-style-type: none"> • The avenue is an integral part of a broader cultural landscape which is based on exotic deciduous trees and conifers planted in a pastoral setting. The seasonal effects, such as flowers and autumn foliage contribute to the aesthetic significance of the Avenue which is representative of its type at least a regional level. • The avenue is a visual landmark located close to the centre of the village. It is also the main unifying element in the village of O'Connell, the avenue links the various historic buildings along the Bathurst - Oberon Road and identifies the location of the village to motorists travelling along the road. (Local) • The canopies of the ash trees create an arched space below that is evocative of the interior of a gothic cathedral, although the design intention has not been fully realised because the trees on one side of the road have been pollarded in the past to clear former powerlines. Although the canopies do not fully meet currently, they still create a strongly legible avenue that is a striking feature in the landscape and as experienced from the roadway. (Local)
Social significance SHR criteria (d)	<ul style="list-style-type: none"> • The avenue has strong social significance to the O'Connell community. This is clearly illustrated from the community commitment and passion at the heart of the scale and form of the 1925 project. The same commitment is evident today in the response and sensitive management and care of the avenue by the community. The O'Connell community also have a strong attachment to the wider cultural landscape of the O'Connell valley which has been evident over many years from their positive efforts to appropriately manage its landscape and environment to ensure that its qualities are not eroded. The O'Connell Progress Association in 1925 is likely to have been the first formal representation of those special associations which have continued through to today. (Local) • The concept of the avenue with its use of Desert Ash trees may have mythological associations and are symbolic in certain cultures of both soldiers and immortality. The ash tree has been a symbol of life, healing, and magic for centuries. It has been used in many religions and folklore tales as a "world tree" or "tree of life", which is a cosmic pillar that connects the heavens, Earth, and underworld. The avenue's cultural value is enhanced by the fact that it is one of only two surviving examples of such plantings in NSW and the O'Connell avenue is unique being substantially intact. (State) • A measure of social significance is the esteem in which an item is held by the contemporary community or recognisable groups within that community. The avenue is recognised by authoritative conservation organisations as an important component of the settlement of O'Connell. In 1974 the O'Connell Conservation Area was one of the first to be listed in New South Wales by the National Trust of Australia (NSW). In 1977 the conservation area was recognised Nationally with inclusion in the former Register of the National Estate. Both of the above listings referred to the Memorial Avenue. The Avenue itself was listed by the National Trust of Australia (NSW) in 2018. These are all clear indicators of the esteem in which the Avenue is held by the contemporary community or recognisable groups within that community and New South Wales (State) • The establishment of the avenue in 1925 required considerable effort, funding and resources, all of which were only made possible by local community action, which reinforces the importance of the memorial in the hearts and minds of the O'Connell community. • A major aspect of the social significance of the avenue lies in its continuing value to the local community in providing an important link with the past. The avenue provides a distinct identity to the settlement which is valued highly by

Draft State Heritage Inventory Form

	<p>many in the contemporary community. Evidence of this may be seen in the decoration of the trees with red poppies made by the Village Preservation Group for Armistice Day since 1996. ANZAC Day services are held annually at the Avenue and the commemorations are well attended by the community. This action highlights the memorial function of the avenue which is not immediately apparent to passers-by. (Local)</p> <ul style="list-style-type: none"> The important links with the past noted above, are also illustrated by recollections of local respected members of the community who were involved in the establishment of the Memorial Avenue and the original tree plantings, such as those recorded from Allan Todd of Wiseman's Creek by the Community Guardians of the ANZAC Memorial Avenue.
Technical/Research significance SHR criteria (e)	<ul style="list-style-type: none"> The Avenue is a benchmark for research into the performance of exotic tree species in a particular locality. Its research value is enhanced by the fact that the years of planting are known and the arboricultural investigations carried out previously and for the CMP and later restoration and maintenance works have yielded considerable data which can be used by others and supplemented in the future. As discussed, the avenue of Desert Ash is a rare example of World War I memorial planting in a state context and has the potential to add to our knowledge of this Australian social custom. (State) The involvement of Regional and State Government in the selection and propagation of the Desert Ash is an important aspect of their research potential. The seeds were sourced from the Middle East. The trees were recommended by the Department of Agriculture as being 'a most beautiful tree' and at this time, the Bathurst Experimental Farm were growing the trees for the Sydney Botanical Gardens, therefore, they were able to supply the trees to the O'Connell Progress Association. The wider State and Regional involvement continues today through the assistance of Faculty of Agriculture, Food and Natural Resources at University of Sydney (State)
Rarity SHR criteria (f)	<ul style="list-style-type: none"> The O'Connell HCA has identified State rarity values as detailed in the 2013 listing; the combination of early history, early settlement patterns, high degree of intactness of the worked rural landscape, high degree of intactness of the traditional buildings and high aesthetic values of the overall river valley setting are rare in NSW. Many of the characteristics of a small 19th C rural English hamlet, transferred to Australia through the early European settlers, are still evident in the character, scale and setting of the village of O'Connell and its buildings. The ANZAC Memorial Avenue is located in the heart of the HCA. (State) The O'Connell ANZAC Memorial was originally envisaged to extend from the centre of the village to the Fish River crossing, approximately 2 miles (3.2km). If completed as first conceived, it was likely to have been the longest Avenue of Honour in NSW at the time (State).
Representativeness SHR criteria (g)	<ul style="list-style-type: none"> The avenue is a highly intact representative example of an early 20th Century living memorial. It incorporates the key aspects of these commemorative memorial avenues, including use of a specific tree species that have strong associations with WW1 and the wider symbolism of lives lost. The Avenue is listed on the respective databases of monuments and memorials and in Australia (State).
Integrity	<ul style="list-style-type: none"> The comparative analysis carried out as part of the 2024 heritage assessment indicated that most of the WWI memorial avenues in NSW had been impacted by change. The change had resulted from a range of issues. Also, the analysis indicated that there were few examples, if any, of an avenue of Desert Ash trees and the only example sourced had been altered with later plantings

Draft State Heritage Inventory Form

	of different species. The O'Connell Memorial Avenue not only (i) retains the majority of its original trees but (ii) the later re-plantings continued use of the original species and (iii) the extent of the memorial avenue remains unchanged from its original 1926 extent.
--	--

HERITAGE LISTINGS	
Heritage listing/s	
NTA(NSW)	Settlement of O'Connell (contributory item), National Trust of Australia (NSW), Classified June 3 1974
RNE (Archive)	O'Connell Settlement (contributory item), Register of the National Estate (non-statutory archive) (Registered Place ID 884 21 st March 1978)
OLEP2015	Oberon LEP 2015 O'Connell Heritage Conservation Area (ref Schedule 5 Part 2) (contributory item), gazetted 13 th March 1998
NTA(NSW) NSW War Memorials Register	O'Connell Anzac Memorial Avenue, Classified June 23 2008 O'Connell Memorial Drive, date uncertain
Monument Australia	O'Connell ANZAC Memorial Avenue, date uncertain
Virtual War Memorial Australia	O'Connell ANZAC Memorial Avenue, date uncertain
Avenues of Honour (treenet)	O'Connell ANZAC Memorial Avenue, date uncertain
TfNSW S170	Not listed. Note : HNSW State Heritage Inventory currently (2024) indicates 191 records of "Avenues" on Council LEPs in NSW - none of which appear to be included on the TfNSW Section 170 Register. The 1977 NSW Heritage Act C1170 and 170A(2) and 2005 State Agency Heritage Guide to include places 'listed in an environmental planning instrument under the Environmental Planning and Assessment Act 1979 as an item of the environmental heritage'.

INFORMATION SOURCES				
Include conservation and/or management plans and other heritage studies.				
Type	Author/Client	Title	Year	Repository
Newspaper	Bathurst Times(?),	Published letter from E.A. Gornall	1916	NSW State Library
r	National Advocate, Bathurst April 25 1917	ANZAC DAY, Today's Celebrations, Bathurst's Magnificent Effort	1917	NSW State Library
Newspaper	Lithgow Mercury November 1924	O'Connell (from our own correspondent) Wedding Edgar Gornall / Jennie McKenzie / Milford	1924	NSW State Library
Newspaper	Bathurst Times, 17 April, 1925	Article	1925	NSW State Library
Newspaper	National Advocate, Bathurst April 27 1925	In a Nutshell, News and Notes	1925	NSW State Library
Newspaper	Lithgow Mercury April 29 1925	O'Connell's Memorial Drives	1925	NSW State Library
Newspaper	Bathurst Times, 18 July, 1925	Article	1925	NSW State Library

Draft State Heritage Inventory Form

Newspaper	Bathurst Times, September 10 1925	District News, O'Connell	1925	NSW State Library
Advertise	National Advocate, Bathurst September 10 1925	O'Connell Progress Association In Aid of Funds for Completion O'Connell ANZAC Avenue	1925	NSW State Library
Newspaper	National Advocate, Bathurst September 10 1925	Radio Ball	1925	NSW State Library
Newspaper	Bathurst Times, November 16 1925	O'Connell	1925	NSW State Library
Newspaper	Bathurst Times, December 4 1925	O'Connell	1925	NSW State Library
Newspaper	Bathurst National Advocate, Thursday January 21, 1926	Lord Allenby, Ceremony at O'Connell, ANZAC Avenue Officially Opened	1926	NSW State Library
Advertise	National Advocate, Bathurst January 26 1926	O'Connell Progress Association Sports Day In Aid of Funds for Completion O'Connell ANZAC Avenue	1926	NSW State Library
Aerial	DCS Spatial Imaging Services	Aerial photograph of O'Connell Village and Memorial Avenue	1963	NSW Spatial Imaging
Listing	National Trust of Australia (NSW)	Settlement of O'Connell	1974	National Trust (NSW)
Listing	Register of the National Estate	O'Connell Settlement	1978	RNE Archive
Heritage Study	MUSEcape in association with David Beaver and Arborscapes for NSW Roads and Traffic Authority, December 1998	Memorial Avenue, O'Connell, Conservation Management Plan	1998	TfNSW
Published	Compiled by O'Connell Village Preservation Group	The Historical Significance of O'Connell Village	1997	O'Connell Village Preservation Group
Heritage Report	Ozark Environmental & Heritage Management P/L for NSW Roads & Traffic Authority, Western Region	Heritage Review, Memorial Avenue (MR 253), O'Connell, NSW	1998	TfNSW
Published	Produced by the O'Connell Village Preservation Group	A Memorial to the Soldiers of O'Connell	2000	
Council Heritage Study	Central West Pilot Program (SHRP) Planning Consultants, Orange in association with Philippa Gemmell-Smith prepared for Oberon Council	Oberon Heritage Study and Thematic History	2004	Oberon Council

Draft State Heritage Inventory Form

State Heritage Inventory Sheet	Philippa Gemmell-Smith, Orange prepared for Oberon Council	State Heritage Inventory Sheet Oberon Heritage Draft Register, SHI Number 2210207	2002	Oberon Council
Unpublished research	Compiled by Marcus	Early History of O'Connell ANZAC Memorial Avenue, Croft	2008	O'Connell Valley Landscape Conservation Group
Listing	Bathurst and District Branch, 26 th May	National Trust of Australia (NSW), Classification Report	2008	National Trust of Australia (NSW)
Public Response	O'Connell Valley Landscape Conservation Group response to Oberon Council	Response to Draft Land Use Issues Paper	2009	O'Connell Valley Landscape Conservation Group
	Warringah Council,	Collaroy Escarpment Reserves, Plan of Management, August 2009	2009	Northern Beaches Council
State Heritage Inventory Sheet	Christo Aitken&Associates, prepared for Oberon Council	State Heritage Inventory Sheet O'Connell Conservation Area	2012	Oberon Council
Information Sheet	O'Connell Valley Landscape Conservation Group	The Cultural Landscape of the O'Connell Valley	2012(?)	O'Connell Valley Landscape Conservation Group
Informal Heritage Report	University of Sydney, Master's Degree Students (Bower, Pradhananga, Ryan,)	O'Connell Heritage Conservation Area	2018	University of Sydney, Architecture Department
Symposium	Stuart Read, Australian Garden History Society	Avenues of Honour in the Landscape – Australia's Living Memorials, The 19 th National Street Tree Symposium,	2018	AGHS
Symposium	Garden History Society, compiled by Stuart Read with additions from AGHS National Management Committee Treenet and other diverse sources	Avenues of Honour, memorial and other avenues, groves and Lone Pines around Australia, in New Zealand and Turkey, from Treenet and other diverse sources	2018	AGHS, https://www.gardenhistorysociety.org.au/wp-content/uploads/2017/07/Avenues-of-Honour-sorted-by-states-Feb-18.pdf
Council Report	Christo Aitken&Associates heritage report prepared for Oberon Council meeting April 6 2024	O'Connell, Avenue of Trees, Proposed Heritage Listing	2024	Oberon Council
Preliminary Heritage assessment	GML Heritage Pty prepared for Chris Muldoon OAWT May 21 2024	Preliminary Heritage Assessment of O'Connell First World War Memorial Avenue, Oberon	2024	Chris Muldoon, OAWT

Draft State Heritage Inventory Form

Published Guidelines	Treenet, Glenn Williams	Avenues of Honour, Guidelines to Developing and Sustaining an Avenue of Honour	2024	Treenet
Family History	Marie Larnach	Family history research, O'Connell	2024?	Marie Lanarch
Local History Research	Ian Browne	Local history research, O'Connell including copy of interview (Date?) with Allan Todd regarding the ANZAC Memorial	2024	Ian Browne

RECOMMENDATIONS	
Recommendations	<ul style="list-style-type: none"> Primary curtilage for OLEP 2013 heritage listing to follow that recommended in 1998. Ref CMP extract. "The corridor of land extending along the length of Bathurst Road – Oberon Road between the intersection with Wiseman's Creek Road (ie Beaconsfield Road) to the north-west and Eight Mile Creek in the vicinity of the O'Connell Hotel (ie Box Flat Flat Road). The corridor should span a width of approximately 25m (centred on the road's centre lines) in order to take in the roadway, shoulders avenues trees and their root systems. This curtilage includes a narrow strip of privately owned land adjoining the road reserve on each side of the road". Secondary curtilage for understanding of significance to be considered from Beaconsfield Road to Fish River. Work closely with TfNSW, Oberon Council and adjoining land owners to avoid impact on the significance, health and character of the avenue. Develop a management approach to address senescence and replacement or extension of the avenue with propagation from the original plantings. Develop interpretation information on the history on the State and Local significance values of the avenue and the community who initiated, implemented and continue to nurture the avenue. Continue ongoing care and maintenance to ensure preservation and overall conservation of the avenue Further investigations regarding originally proposed extent of Avenue to the Fish River crossing potential for completion and some future date.

SOURCE OF THIS INFORMATION			
Name of study or report	ANZAC Memorial Avenue, Bathurst-Oberon MR253, Heritage Assessment Planning Proposal OLEP, Schedule 5 Part 1 Heritage Items	Year of study or report	2024
Item number in study or report	SHI 2210207		
Author of study or report	Christo Aitken & Associates		
Inspected by	Damian O'Shannassy, Planning & Development Manager		
NSW Heritage Manual guidelines used?		Yes <input checked="" type="checkbox"/>	No <input type="checkbox"/>
This form completed by	Christo Aitken, Conservation Architect	Date	20/01/25

Draft State Heritage Inventory Form



Image caption	O'Connell ANZAC Memorial Avenue view looking east illustrating the form and character of the dual row of Desert Ash trees and the road approach to the village on O'Connell.				
Image year	2018	Image by	Australian Historical Garden Society / Stuart Read	Image copyright holder	Australian Garden Historical Society / Stuart Read



Draft State Heritage Inventory Form

Image caption	National Advocate Thursday 10 September 1925. A newspaper advert illustrating the range of local events and activities organised by the O'Connell community to fund the ANZAC Memorial Avenue between 1924-1927.				
Image year	1925	Image by	NSW State Library	Image copyright holder	NSW State Library

of Mr. Bath-
180
of Mr. Bath-
Berne-
inworth.
are in-
of their
toer 15-
move
at 3
for the
Ceme-
street.

return
kind
letters,
mpathy
d bere-

meet-
g Club
ed Pat-
or many
Kay of
sed to

**ALSO STORE CATTLE AND SHEEP
and FORWARD MILKING SPRING
ERS.**

Trucks have been secured to load im-
mediately after sale.

**O'Connell Progress Association
Announces**


Radio Ball

In aid of the Funds for the Comple-
tion of the **O'CONNELL
ANZAC AVENUE**
C. of E. HALL, **O'CONNELL**

14th OCTOBER

Paton's Orchestra
Dancing etc. by the **ROLLS ROYCE
OF RADIO**
Kindly lent by **MESSRS MOCKLER
BROS**

**TICKETS:—Double 10/6, Gents 7/6,
Ladies 5/6, Juveniles 2/6.**
E. A. GORNALL,
Promoter.



only 2/10/10/1
Exchange

RESERVE, S
for Spring Ca
port Show As

FRESH EGGS
ket prices. Red

WANTED a
man and carts
C. A. Turner,

DON'T fail to
the Spring Ca
ber.

WANTED cod
ford" O'Conne
133 Stewart S

SPRING Carni
tion, Saturday
mission 1/.

TO LEASE
flat, all conve
William street
preferred. Padi

GENUINE Pac
valled plate gl
signs, beautifu
Rathurst Furn

MANY Homes
Paddisons, mo
the increasing

Draft State Heritage Inventory Form

Image caption	National Advocate Thursday 10 September 1925 raising the profile of the coming Radio Ball and specific reference to completion of the first stage and seeking funds for the immediate start on the second stage to the Fish River.				
Image year	1925	Image by	NSW State Library	Image copyright holder	NSW State Library

RADIO BALL

A Radio Ball, one of the first to be held outside the Metropolis, is announced for 14th October, to be held at O'Connell, which centre is renowned for the excellence of its dances and sumptuousness of its suppers. The live wires of the community have for some time past been getting together under the guiding hand of Mr. Edgar Gornall, and already the first half of the Anzac Avenue has been completed and runs from the store to the Hotel, a distance equivalent to about five street blocks. So far 225 Desert Ash trees have been planted. It is hoped that by means of the projected ball sufficient money will be raised to enable an early start to be made on the planting of the second section, from the store to the bridge, which will require about three hundred more trees. The completed avenue will be one of the longest in Australia, and great credit is reflected on those progressive people concerned. Mr. L. Paton's orchestra has been engaged for the ball, and it will be supported by the radio items from the famous Udisco Super Six set, which is capable of receiving effectively from any station in the world. This set has been kindly lent by Messrs. Mockler Bros., who are the live agents for the Udisco.

Draft State Heritage Inventory Form

Image caption	Bathurst Times 17 October 1925 article outlining the success and social details of the fund raising event.				
Image year	1925	Image by	NSW State Library	Image copyright holder	NSW State Library

<p>The O'Connell Radio Ball.</p> <p>This year O'Connell has had some very successful dances, namely the Convent Ball, the Bush Nursing Dance, and now the much talked of and looked for Radio Ball which was held on the 14th instant.</p> <p>This success both socially and financially eclipsed that of any similar function held in O'Connell for many years and great credit is due to Mr. and Mrs. E. Gornall, and the Misses Condon and their band of helpers for the very successful function.</p> <p>The ball was launched by the O'Connell Progress Association to provide funds to complete the work of erecting the Anzac Avenue at that centre.</p> <p>In this work Mr. Gornall has worked very hard and it must have been very pleasing to him to see such a great assemblage of people in attendance, to give the Avenue project their financial help.</p> <p>The weather conditions were admirable and the great crowd was very ably catered for.</p> <p>The ballroom was nicely decorated with flags, lanterns and balloons and the decorations in the supper room were specially admired by all. During intervals between the dances, through the courtesy of Mr.</p> <p>J. Mockler, the big Six Udisco Wireless set was in operation and items from Mockler Bros' Broadcasting Station were much appreciated.</p> <p>Much credit is due to Mr. E. K. Gillies, Messrs. Mockler Bros wireless manager, for the excellent manner in which the arrangements for the broadcasting and reception were carried out. Mr. Gillies was very ably assisted by Mr. Colville, of Messrs. Colville and Moore, Sydney, and Mr. Leo Curran. Where a receiver is installed it is necessary to avoid floors of a springy nature, especially where dancing is in progress. If this precaution is not taken, microphonic noises are set up in the valves and distortion results. This was the case at the ball.</p> <p>The music which was supplied by Paton's full orchestra was wonderful. Very little time was lost between dances, and the music itself was so electrifying that the members of the orchestra had a busy time giving encores.</p> <p>A BALL TO REMEMBER</p> <p>Those who attended the ball will certainly remember the beautiful supper which was set before them. It is hard for me to tell you of all on the tables, your imagination will do that for you; but the ladies committee who prepared this beautiful</p> <p>supper for you; but the ladies committee who prepared this beautiful repast excelled themselves. The committee was as follows: Meadames Gornall, Mullampy, McKibbin (2), Pickup, Locke, Spicer, Duggan and Miss Condon. These ladies were ably assisted by a band of willing helpers. Dancers came from all surrounding districts and each one had such a wonderful time that they are looking forward to such another O'Connell function.</p> <p>SOME OF THE DRESSES</p> <p>In the crowd of dancers I noticed: Mrs. E. Gornall, pillar box georgette; Miss Heather McPhillamy, wine morocain with gold lace trimmings; Miss Gladys Unwin, powder blue crepe de chine; Mrs. Unwin, floral crepe de chine touches of burnt orange; Mrs. Josh, ivory charmeuse; Mrs. Stonhope, black; Miss Ho McPhillamy, natter panne with touches of cerise; Miss Lily Spicer, Nile green de sole; Mrs. Joe Locke, emerald georgette heavily beaded; Miss Dorrie Thompson, mauve baronet satin; Miss Mary Colie, pink silk, blue swandown trimming; Mrs. Bert Bailey, grey; Miss B. McKenzie, mastic georgette; Mrs. Dowler, rose taffeta; Mrs. Pickup, peacock green overskirt of gold metallic lace; Miss Laurie, pale pink taffeta; Mrs. Tom McKibbin, orinal; Miss Sluman (Sydney) Alice blue taffeta and georgette; Miss Oakleigh, white brocaded morocain; Mrs. Miller (Brewongle) blue brocaded morocain; Miss Olive Atkins, cherry georgette, black fur trimmings; Miss Una Minahan, gold lace; Mrs. Mullampy, green crepe de chine; Mrs. Leicester Johnson, pale pink and silver and her sister Miss Sluman of Sydney, deep rose cashmere de sole; Mrs. J. Newton, black; Miss Madge Locke, black velvet; Miss Berrie Oliver, Cyclamen satin; Miss Abby Condon, red morocain, accordion pleated overskirt; Miss Marcia Hartigan, flame georgette black fur trimmings; Miss Phoenix Condon, cream crepe de chine; Miss Hazel Pascoe, mauve silver lace; Miss A. Waddell, black, touches of emerald; Mrs. Sam McKibbin, black; Mrs. L. Tobin, rose taffeta; Miss Alma Tobin, sunburnt georgette, gold lace trimmings; Mrs. Hanckel, black cashmere de sole; Mrs. Larking, sunset figured morocain; Mrs. Duggan, radio blue silk, with net overdress to tone finished with beaded trimmings; Mrs. Gleeson, black silk morocain; Mrs. Seymour, cream; Miss C. Davenport, sunset mousseline brown fur trimmings; Miss Irene Locke, old gold georgette; Mrs. Currie, ivory crepe de chine and georgette; Mrs. A. J.</p>					
---	--	--	--	--	--

Draft State Heritage Inventory Form

Image caption	National Advocate Thursday 21 January 1926 article covering the opening ceremony for the ANZC Memorial Avenue in O'Connell.				
Image year	1926	Image by	NSW State Library	Image copyright holder	NSW State Library

<p style="text-align: center;">LORD ALLENBY CEREMONY AT O'CONNELL ANZAC AVENUE OFFICIALLY OPENED "NEVER LED BRAVER TROOPS."</p> <p>Yesterday marked a memorable stage in the history of the picturesque township of O'Connell. It had a visit from a distinguished soldier of the Empire, Field Marshal Lord Allenby, who kindly acceded to the request of the residents to break his journey to the Jenolan Caves in order to officially open the completed portion of the Anzac Avenue, which the people of O'Connell and district are establishing as a memorial to fallen soldiers. The undertaking was inaugurated in March last, and the portion of the avenue already finished covers three quarters of a mile, and extends from the Post Office in the direction of Oberon. The remaining portion to be laid down will run from the Post Office to the bridge over the Fish River, a distance of another three quarters of a mile. So far 20 trees have been planted in the completed part of the avenue, and the expenditure in connection therewith has been met. They are of the desert ash variety, and were grown in the Bathurst Experimental Farm for the Sydney Botanical Gardens, whence they were supplied to the O'Connell Progress Association for the purpose indicated.</p> <p>When the memorial is an accomplished fact, O'Connell will have as tangible evidence of its gratitude and appreciation of the services rendered to the Empire by men who fought and fell, an avenue of 500 trees, which, it is estimated, will cost £300, and which all concerned confidently anticipate, will be a thing of beauty and a joy to all beholders. It will add materially to the attractiveness of the township, and, besides being a memorial to the soldiers, will represent a tribute to the energetic efforts of the local Progress Association, and the admirable community spirit which brought it about. Mr. E. A. Gornall, the president of the Association, and one of the live wires of O'Connell, has had the assistance of an active body of workers of both sexes in forwarding the movement, and all concerned are to be congratulated on the success that has so far been achieved.</p> <p>When Lord Allenby arrived at O'Connell at about 4.30 yesterday afternoon, there was a fair sprinkling of residents present to witness the opening ceremony. Among those in attendance were Messrs. E. A. Gornall (and Mrs. Gornall), H. S. Westcott, Condon, C. Harris, P. Purdon, W. H. Josh, W. T. Pickup, Rumble (and Mrs. Rumble, Katoomba), and Miss B. McKenzie, and Misses Condon.</p> <p>Ideal weather prevailed for the occasion. The sun shone brightly, and the air was clear and crisp after a shower of rain, which passed over the district an hour or two previously. As the distinguished visitors drove up in a motor car, piloted by Dr.</p> <p>As the distinguished visitors drove up in a motor car, piloted by Dr. Stack, they were received by Mr. Gornall on behalf of the residents, and conducted to seats at the side of the road, across which was stretched a white ribbon, as a symbol that the avenue was not yet officially open.</p> <p>Mr. Gornall, in welcoming Lord and Lady Allenby, said that the great Field Marshal's name was known the wide world over. Though O'Connell was a small settlement, that day it would be placed on the map by Lord Allenby. Small as it was, however, the township had an interesting history. Mr. Gornall claimed that it was the cradle of the West. It was through O'Connell that the pioneers of the early days passed to the Western parts of the colony, and that was the original road over which they journeyed. The road was 100 years old, and two years before that, tribes of blacks fought in the vicinity. The first Australian Bishop was born at O'Connell, and the first divine service held on this side of the mountains took place on the hill just behind that spot, 102 years ago. It was indeed a privilege to have Lord Allenby with them that day to open their avenue. Next to the King, no man living could confer greater honor upon them by his presence than could Lord Allenby. He was the man who had freed the Holy Land from the infidel. As that avenue had been planted in memory of the glorious dead, it was most fitting that it should be opened by a man who restored the Holy Land to the Christians.</p> <p>Lord Allenby, speaking in the simple, earnest tones of the man of action, made a brief reply. He said that he felt it a very great honor to be asked to declare open an avenue dedicated to the memory of the gallant Australians who fell in the war. He had had the honor of leading many Australians, and he never wished to lead braver troops. Their names would live forever in the gallant deeds they had performed for the Empire, and it was fitting that their memory should be perpetuated by an avenue of that kind. As the trees flourished and grew larger in stature, he trusted that the memory of the men to whom they were dedicated would become greener and greener, and more firmly fixed in the minds of their fellow countrymen. "I have great pleasure in declaring this avenue open," said Lord Allenby, in conclusion.</p> <p>Lady Allenby, with a pair of scissors, then severed the ribbon, and the avenue was officially open to the public.</p> <p>"I thank you for giving me this opportunity. It is a great honor," remarked Lord Allenby to Mr. Gornall, after the ceremony.</p> <p>Before Lord and Lady Allenby's departure, Private Harris, who fought in Palestine with the Second Battalion, and Mr. E. S. Westcott, who belonged to the Naval Reserve, were presented to Lord Allenby.</p> <p>Cheers were given for the distinguished visitors as they resumed their journey to Oberon and the Jenolan Caves.</p>					
--	--	--	--	--	--

Draft State Heritage Inventory Form

Image caption	Lord and Lady Allenby departing a train at Central Station, Sydney, 19 January 1926 (Sydney Morning Herald / Fairfax) . This photograph is likely to have been taken at the time of Lord and Lady Allenby departing Sydney for the Blue Mountains, O'Connell and the Jenolan Caves. The opening ceremony of the O'Connell ANZAC Memorial Avenue occurred on 20 th January 1926.				
Image year	1926	Image by	Fairfax	Image copyright holder	Fairfax



Draft State Heritage Inventory Form



Image caption	Field Marshall Edmund Allenby in 1917				
Image year	1917	Image by	Australian Defence Force	Image copyright holder	National Army Museum



Draft State Heritage Inventory Form

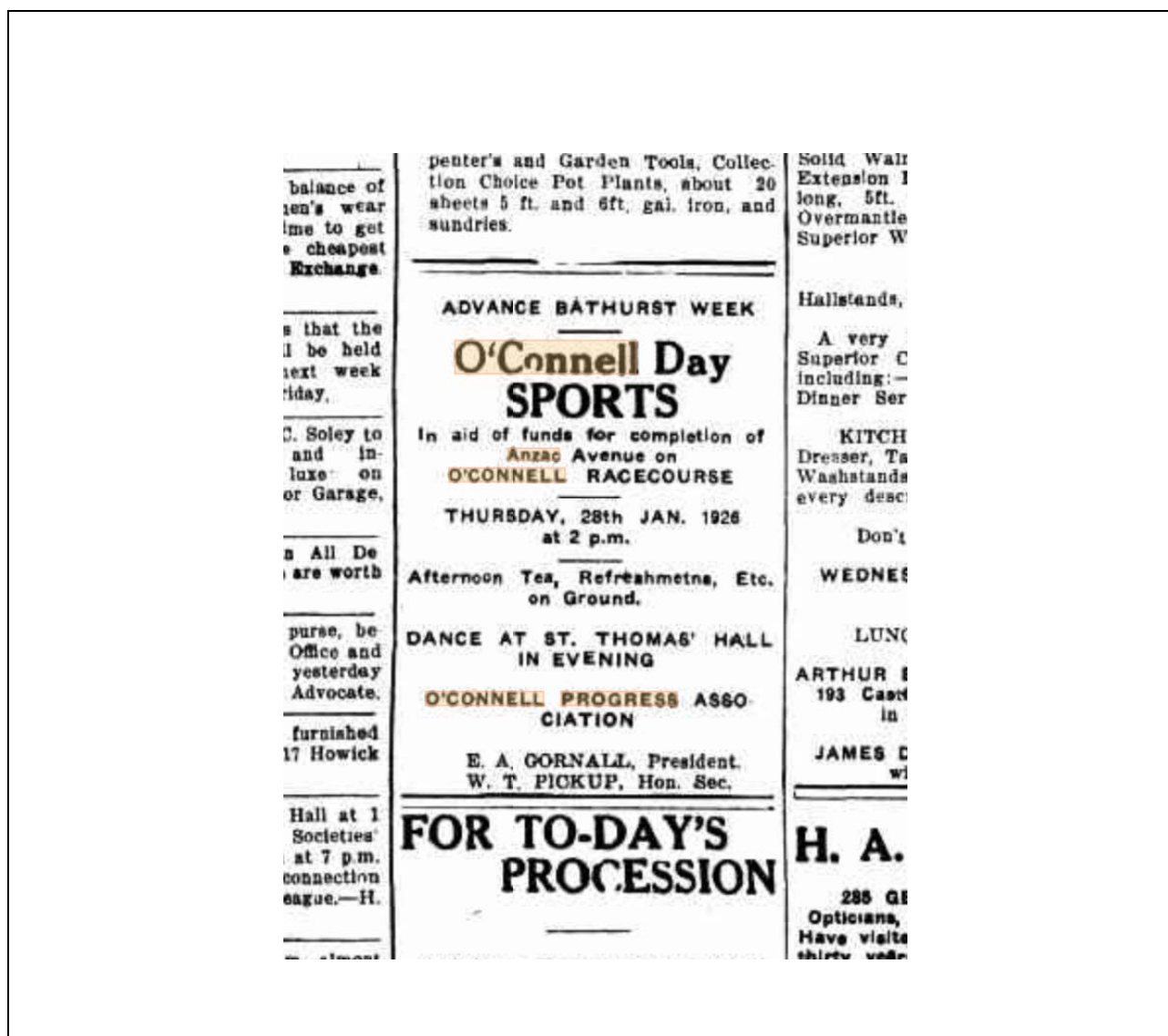


Image caption	Edgar Gornall was aged 19 in 1914 when he enlisted as a Private in the 20 th Battalion, 'A' Company. (Source : <i>Marie Larnach family history research, O'Connell</i>)				
Image year	1914	Image by	Unknown	Image copyright holder	Unknown



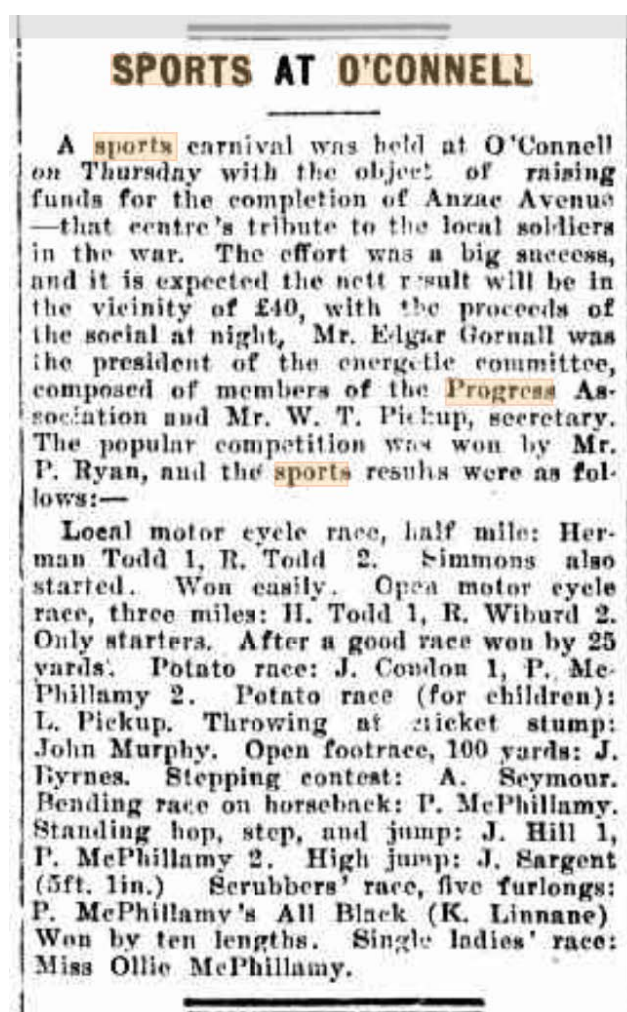
Draft State Heritage Inventory Form

Image caption	National Advocate, Bathurst Saturday 23 January 1926 advertising ongoing funding events organised by the O'Connell Progress Association in February 1926 after the opening of the first stage in mid January 1926.				
Image year	1926	Image by	NSW State Library	Image copyright holder	NSW State Library



Draft State Heritage Inventory Form

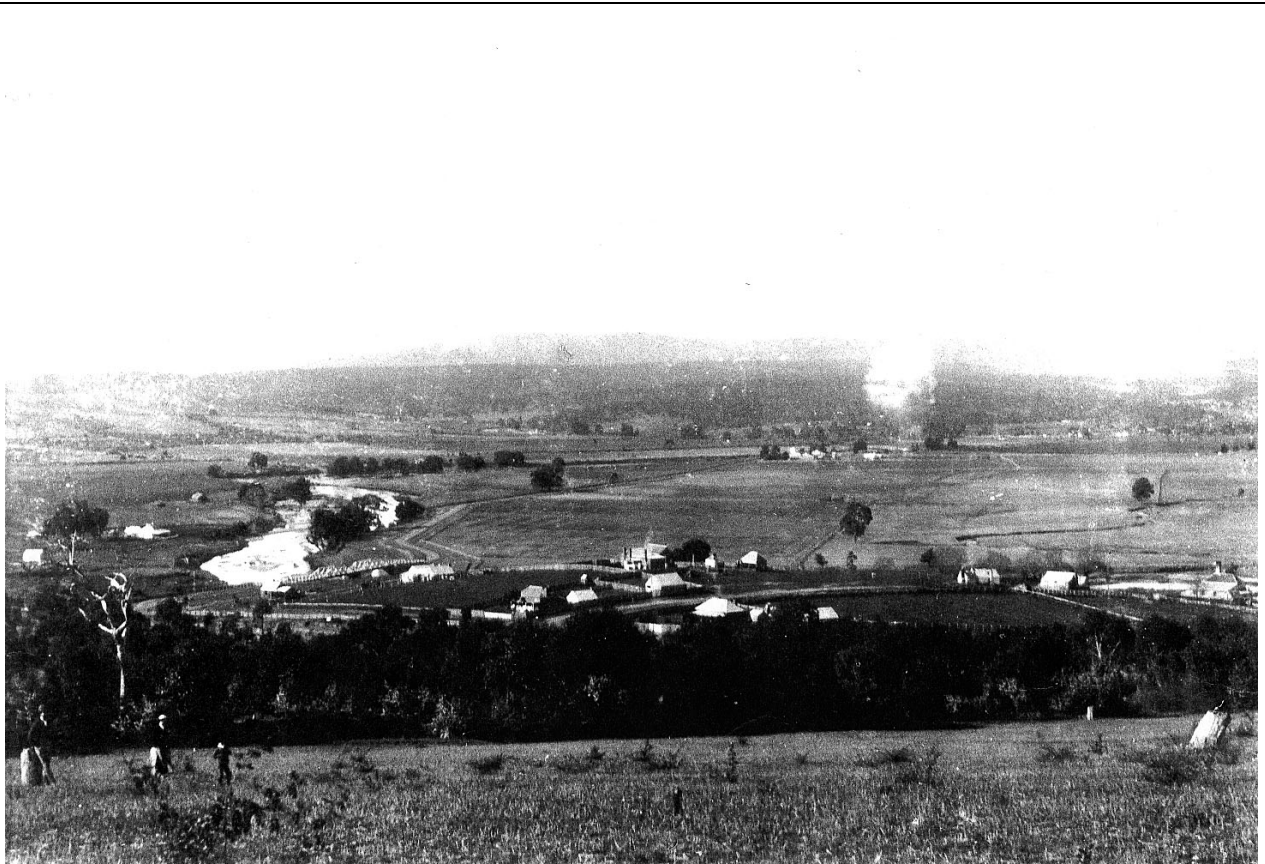
Image caption	Lithgow Mercury Friday 5 th February 1926 article relating to the ongoing successful events and in this case a sporting carnival to raise funding to complete the ANZAC Memorial Avenue to the Fish River crossing.				
Image year	1926	Image by	NSW State Library	Image copyright holder	NSW State Library



Draft State Heritage Inventory Form



Image caption	Comparative views of the O'Connell Valley. Historic Photograph from Cox's Hill Looking southwards across the O'Connell valley possibly around 1900. Comparative view from Cox's Hill in 2012.				
Image year	C1900	Image by	Unknown	Image copyright holder	Unknown



Draft State Heritage Inventory Form

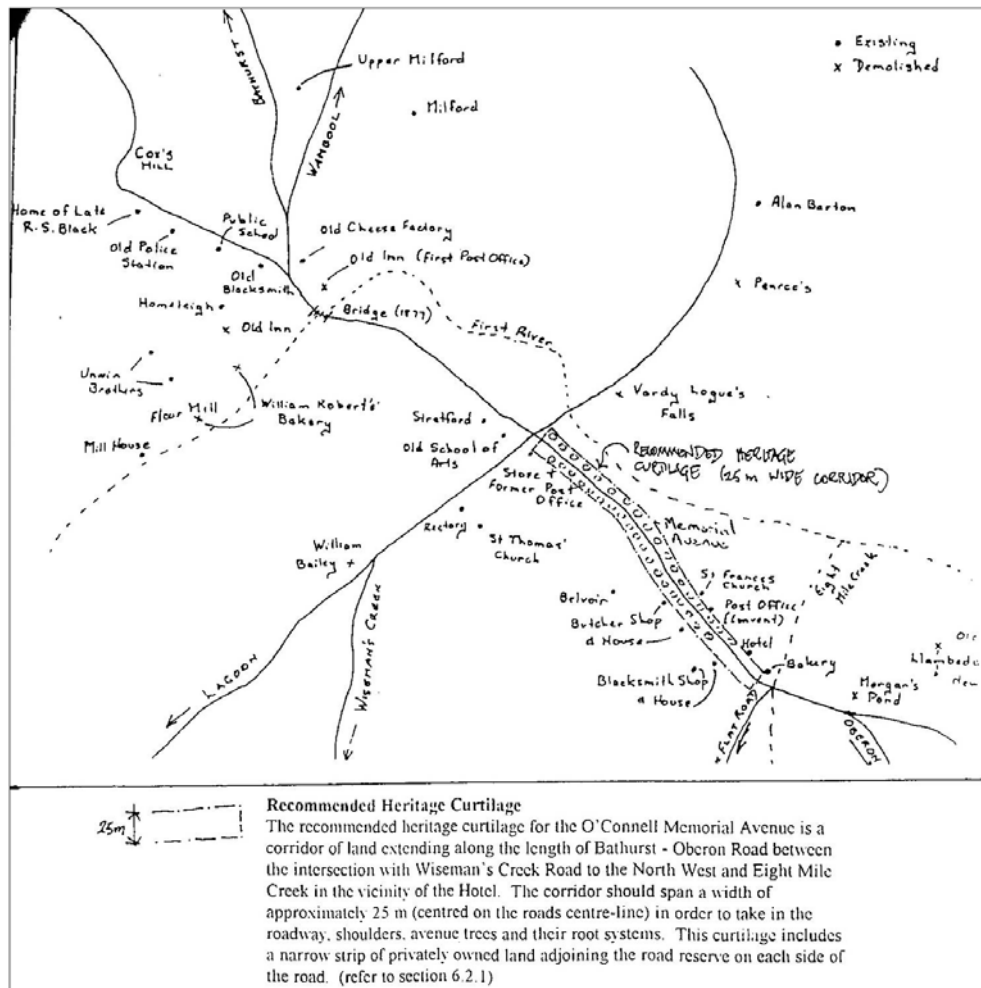


Image caption	Extract from SIXMAPS of the O'Connell valley. The current extent of the ANZAC Memorial Avenue (3/4 mile) is highlighted by a broken red line. The Fish River crossing (top left) and the O'Connell Hotel (lower right) are highlighted by broken red circles. The second stage of the Avenue is highlighted in an orange broken line (3/4 mile).				
Image year	2024	Image by	CA&Associates using SixMaps	Image copyright holder	CA&Associates



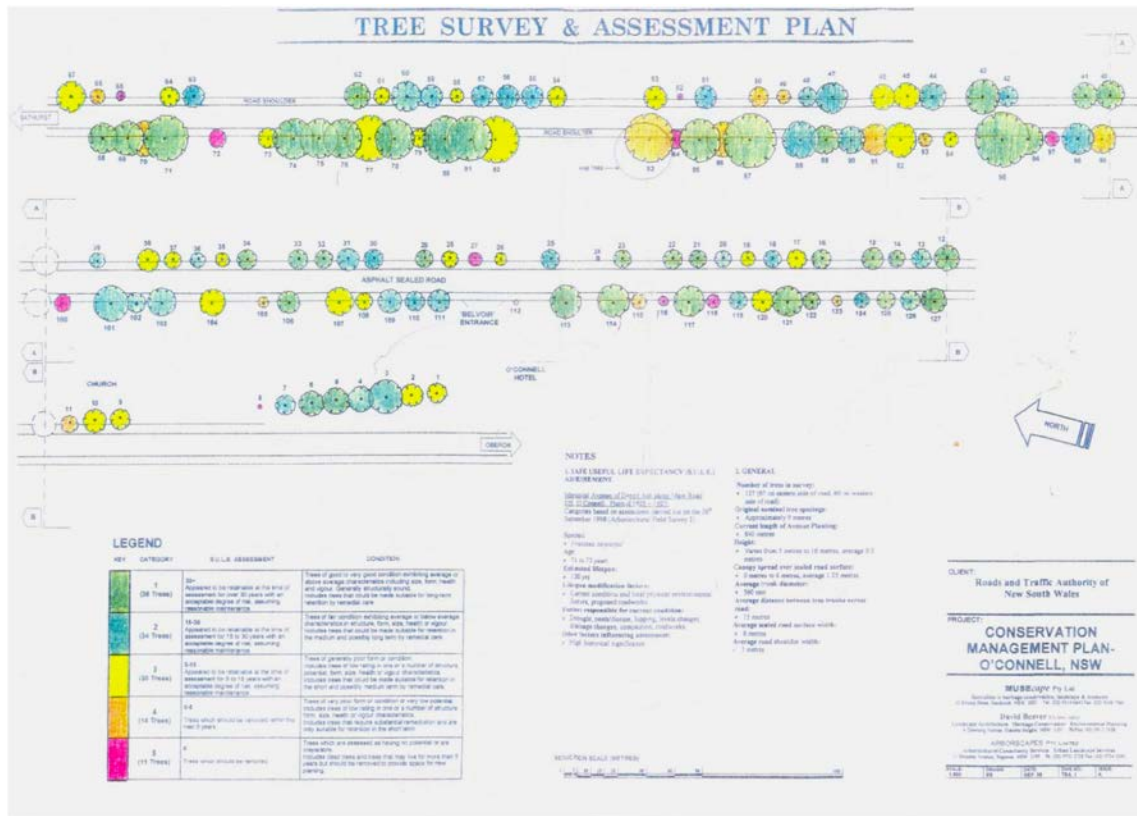
Draft State Heritage Inventory Form

Image caption	Extract curtilage proposals included in the 1998 CMP for the ANZAC Memorial Avenue overlaid on an earlier O'Connell Village map prepared by the O'Connell Village Preservation Group				
Image year	1998	Image by	MUSCape and David Beaver, Landscape Architect	Image copyright holder	MUSCape and David Beaver, Landscape Architect



Draft State Heritage Inventory Form

Image caption	Extract from 1998 CMP Appendix A report prepared by Arborscapes in association with MUSCape and David Beaver as part of the detailed tree survey and assessment report.				
Image year	1998	Image by	Arborscapes Pty Ltd, MUSCape and David Beaver	Image copyright holder	Arborscapes Pty Ltd, MUSCape and David Beaver



Draft State Heritage Inventory Form

Image caption	Entry gateway to the Edgar Gornall Wildflower Gardens at Collaroy Plateau with view to Narrabeen, on the Northern Beaches. (Source : Northern Beaches Library Services Record Number LH000134)				
Image year	1950(?)	Image by	Morcombe	Image copyright holder	Northern Beaches Council / Library Services History Hub / Morcombe



Draft State Heritage Inventory Form

Image caption	Completion of the entry signage at the eastern end of the ANZAC Memorial Avenue with supporting representatives from State and Local Government and the O'Connell community.				
Image year		Image by	Community Guardians of the ANZAC Memorial Avenue	Image copyright holder	Community Guardians of the ANZAC Memorial Avenue



Draft State Heritage Inventory Form